



Real-time temperature tracking



Possible applications:

- Continuous temperature monitoring of cold goods
- Monitoring refrigerated vans and refrigerators
- Monitoring the overheating of machines (up to 80°C)
- Alerts in case of inadequate temperatures

Overview

The NaBi is capable of continuous temperature measurement within a -40°C to +85°C range. The NaBi Solo device has a thermometer with one degree accuracy, whilst the NaBi Connect is equipped with a tenth-degree thermometer and a humidity meter. The measured data is sent to the General Track server through the NBloT network.

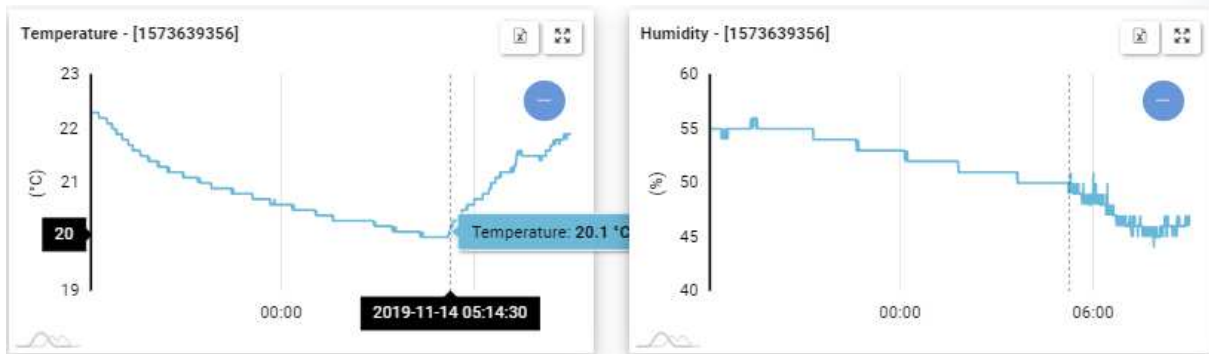


Figure 1: Temperature tracking with the NaBi



The frequency of temperature tracking and the times and frequency of sending it to the server can be easily set, which allows the temperature to be monitored in real-time.



In case the preset temperature is exceeded, immediate location-tracking and alerts/notifications can be set (via e-mail or push notifications, Figure 2).



You can display the momentary data graphically but you can also take a look years back. (Figure 1). The data can be downloaded in Excel format or automatically uploaded to different IT systems via standard HTTP API.



Event	Time	Notification information
 Low temperature	2019-09-08 01:02:28	Notification threshold 20° Temperature: 20°C
 High temperature	2019-09-08 11:42:28	Notification threshold 20° Temperature: 20°C

Figure 2.: Alarms

Find out more about the possible applications of the device – like motion tracking or hour metering - on the website at <https://www.nabitrack.com#applications> website. The functions based on different sensors can be used together or separately. For instance, the real-time temperature and location of refrigerated goods can be tracked simultaneously.